

**KENNEDY VALVE FLOOR TYPE
PRESSURE RELIEF VALVE**

KENNEDY VALVE

Size 4"

Figure No. F-1493

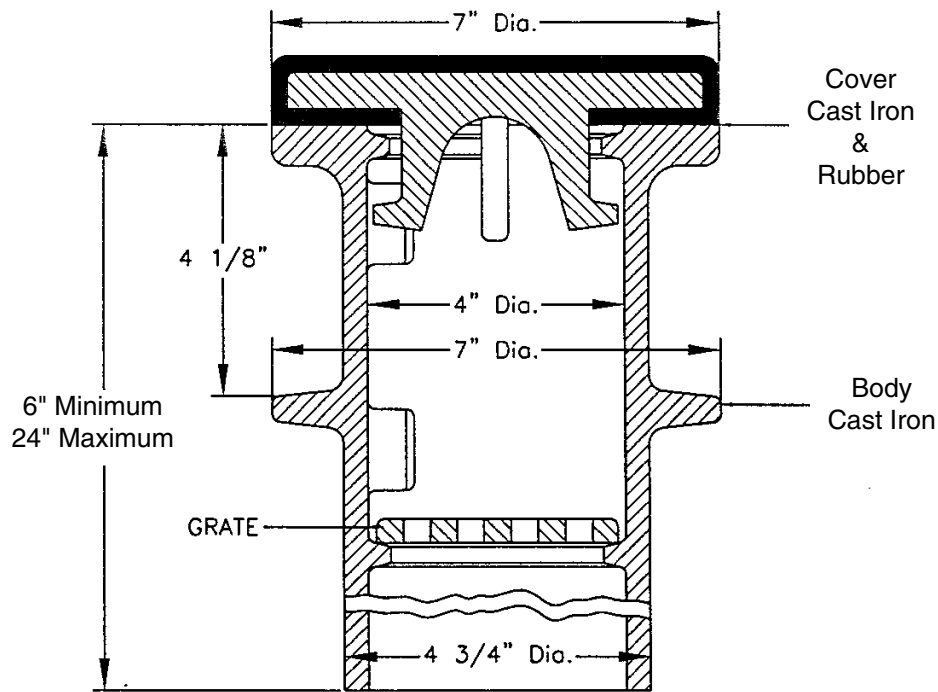
Body Length - "L" - Inches	12	18	24
Weight Complete - Pounds	33	41	51

1. A RUBBER (EPDM) TO METAL SEAL IS ACCOMPLISHED WHEN THE COVER IS IN THE CLOSED POSITION, METAL FACE IS COATED WITH EPOXY PAINT.
2. GROUND WATER PRESSURE CANNOT SEPARATE COVER OR GRATE FROM BODY.
3. COVER AND GRATE CAN BE REMOVED BY TURNING TO RIGHT OR LEFT AND LIFTING OUT.
4. THE COVER WEIGHS APPROXIMATELY 6 POUNDS AND STARTS TO OPEN AT A HEAD OF APPROXIMATELY 9" OF WATER.
5. IN ORDER FOR THE F-1493 FLOOR TYPE VALVE TO OPERATE CORRECTLY, IT MUST BE INSTALLED IN A VERTICAL POSITION.

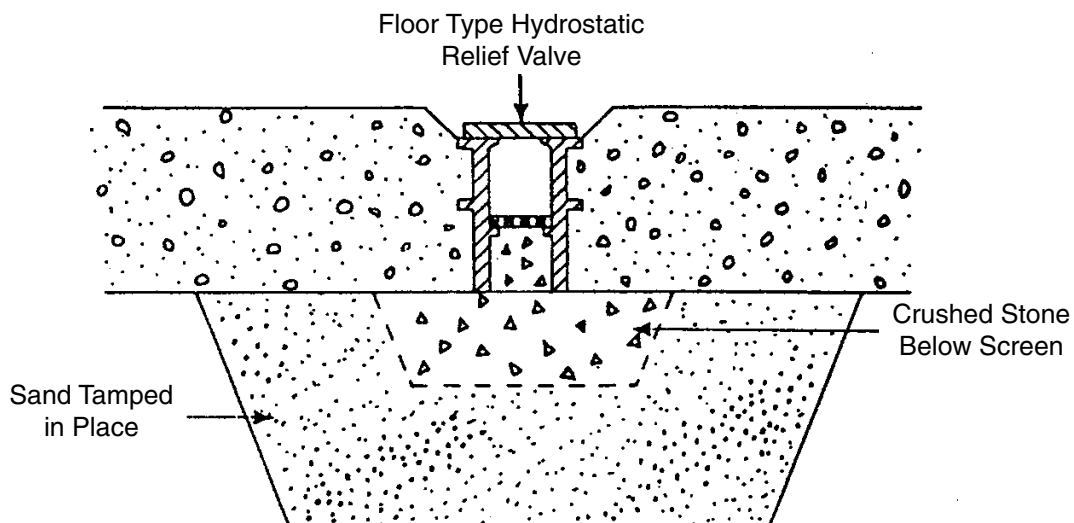
**FLOOR TYPE PRESSURE
RELIEF VALVES
CROSS SECTION & PARTS LIST**

KENNEDY VALVE

F-1493



F-1493 Floor Type Pressure Relief Valve



**SUGGESTED SPECIFICATIONS
KENNEDY VALVE 4" FLOOR TYPE
PRESSURE RELIEF VALVES**

KENNEDY VALVE

Specifications

Floor type hydrostatic pressure relief valve shall be designed for installing in the bottom of concrete tanks.

The assembly shall consist of three parts: cover, body and grate. All three parts shall be of cast iron conforming to ASTM specifications A-126 Class B. They shall be designed so that neither the cover or grate can become separated from the body of the valve, due to groundwater pressure around the tank. However, when necessary, both may be easily removed by turning them to right or left to free them from locking lugs cast integrally on the inside of the body.

The seats shall be of EPDM rubber, bonded to the cover, mating with an epoxy coated seat in the body.

Floor type pressure relief valves shall be as manufactured by Kennedy Valve or approved equal.