

KENNEDY VALVE SHEAR GATES, IBBM

KENNEDY VALVE

Size Range	Working Pressure
4"-30"	Recommended for use in lines of low seating pressure only.

Note: Seating pressure is pressure tending to push gate to seat.

Available End Connections & Size Range Figure No.

Flanged End Frame	4"-30"	F-3000
Standard End	4"-30"	F-3002

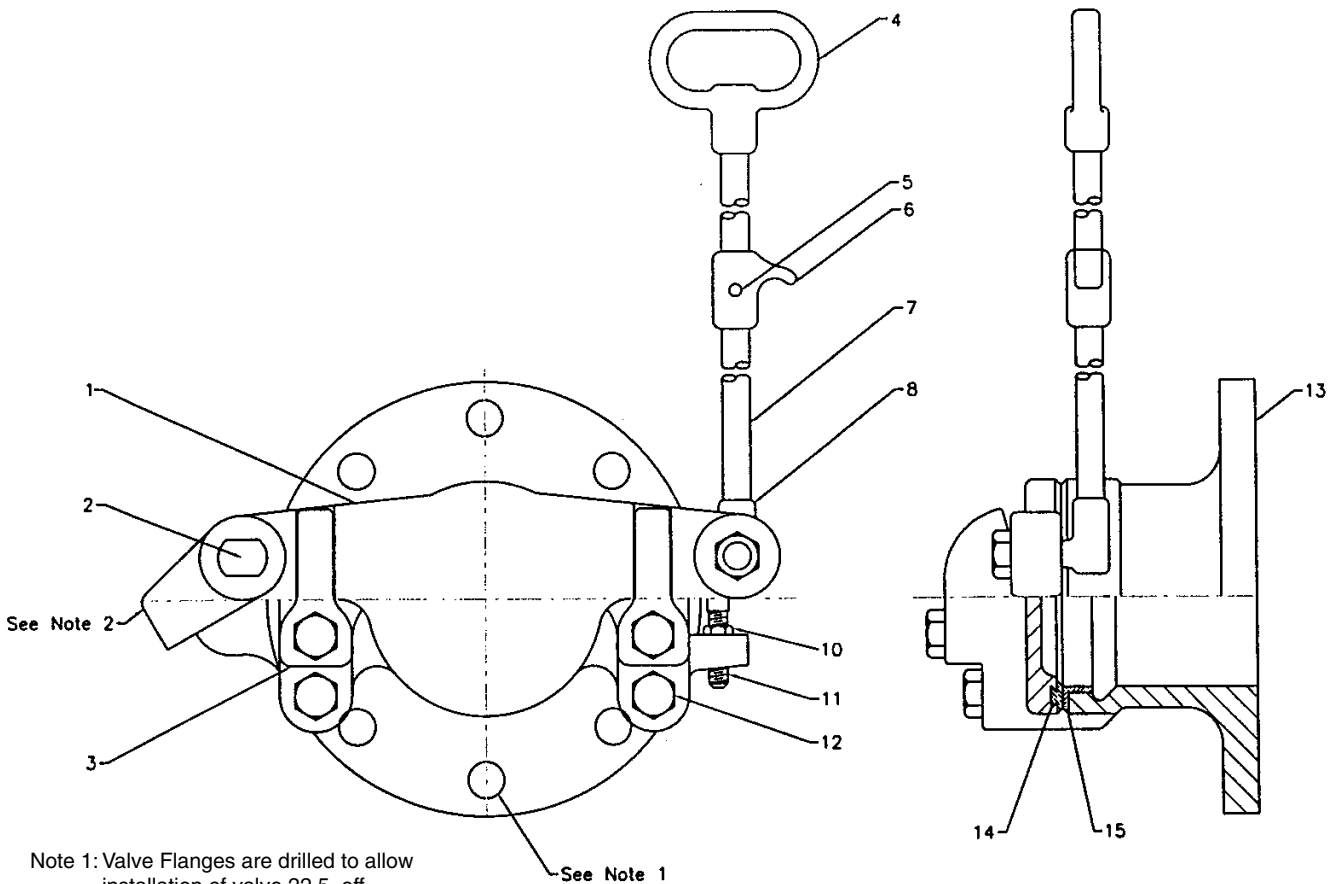
Note: Flanged End Frame and Standard Frame are faced and drilled to ANSI 125 pound template except on standard frame holes under wedges are omitted.

Accessories

Lifting Handle & Hooks

SHEAR GATES - TYPICAL CROSS-SECTION AND PARTS LIST

KENNEDY VALVE



Note 1: Valve Flanges are drilled to allow installation of valve 22.5 off horizontal centerline

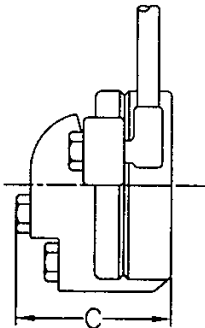
Note 2: Stop lugs furnished on 4" thru 12" only

DET.	QTY.	DESCRIPTION	MATERIAL
1	1	GATE	CAST IRON
2	1	HINGE PIN	BRONZE
3	2	WEDGE	BRONZE
4	1	HANDLE	MALLEABLE IRON
5	-	DRIV-PIN	STAINLESS STEEL
6	-	HOOK	MALLEABLE IRON
7	-	ROD	HOT ROLLED STEEL
8	1	TOE	MALLEABLE IRON
9	1	NUT	STL ZCCTD
10	1	NUT	STL ZCCTD
11	1	STUD	STL ZCCTD
12	4	CAPSCREW	STL ZCCTD
13	1	BODY	CAST IRON
14	1	GATE RING	BRONZE
15	1	BODY RING	BRONZE

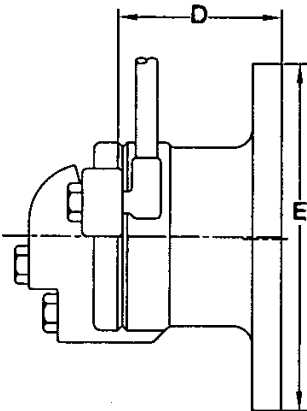
SHEAR GATES GENERAL DIMENSIONS

KENNEDY VALVE

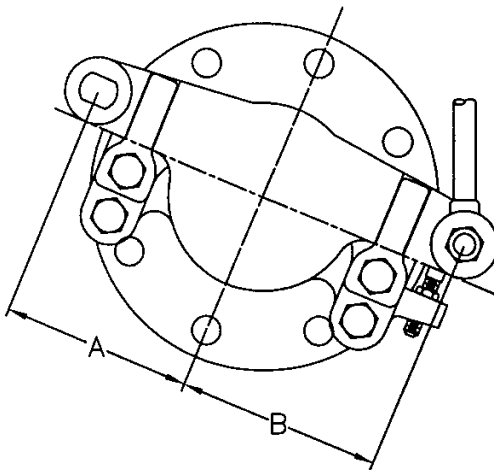
Standard
Frame
F-3002



Flanged
End
Frame
F-3000



End View
of Shear Gates
Frame



VALVE SIZE	4	6	8	10	12	14	16	18	20	24	30
A	5	6-1/4	7-5/8	9	10-1/4	11-3/8	14	14-5/8	16	18	22
B	5	6-1/4	7-5/8	9	10-1/4	11-1/2	14	15	16-1/2	18-1/2	22
C	4-1/2	4-3/4	4-3/4	4-7/8	5	5-7/8	5-1/2	5-3/4	6-1/4	7-5/8	9-1/2
D	4	6	8	8	8	8-1/4	8-1/4	8-1/4	9-7/8	10-5/8	13-1/4
E	9	11	13-1/2	16	19	21	23-1/2	25	27-1/2	32	38-3/4

**SUGGESTED SPECIFICATIONS
KENNEDY VALVE SHEAR GATES**

KENNEDY VALVE

Shear gates shall be full opening, circular port, iron body bronze mounted design and furnished with (flanged end, standard frame, hub end, spigot end or as called for in specifications or as indicated on plans).

The body (frame), gate and wedges shall be of case iron conforming to ASTM specification A-126 Class B.

The valve shall be furnished with two (2) wedges bolted to the body so they can easily be removed and replaced due to wear.

The gate shall be sturdily proportioned and pivot on a solid bronze hinge pin.

The bronze gate (seat) ring shall be rolled into a dovetailed groove under pressure to make one inseparable unit. The bronze gate ring face shall be machined to a smooth finish. The body seat ring shall be bronze, threaded and screwed into place and the face machined to a smooth finish.

All sizes of shear gates shall be furnished with an adjustable stop on wedge to prevent jamming gate to seat.

Shear gates shall be furnished with lifting handles measuring (ft. inches) overall length or as indicated on plans.