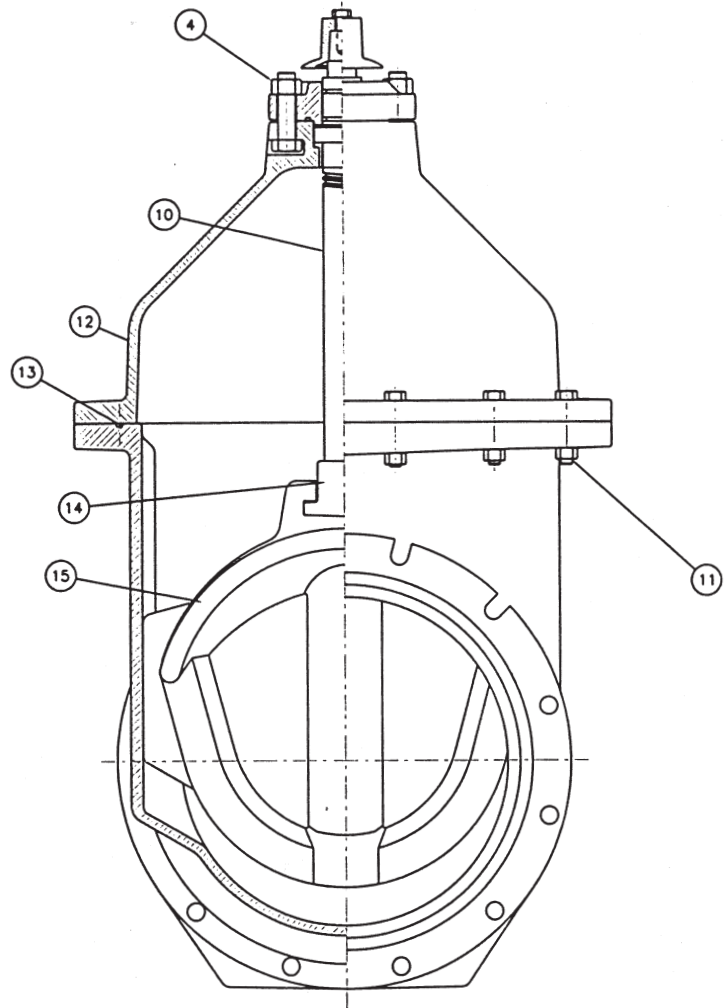
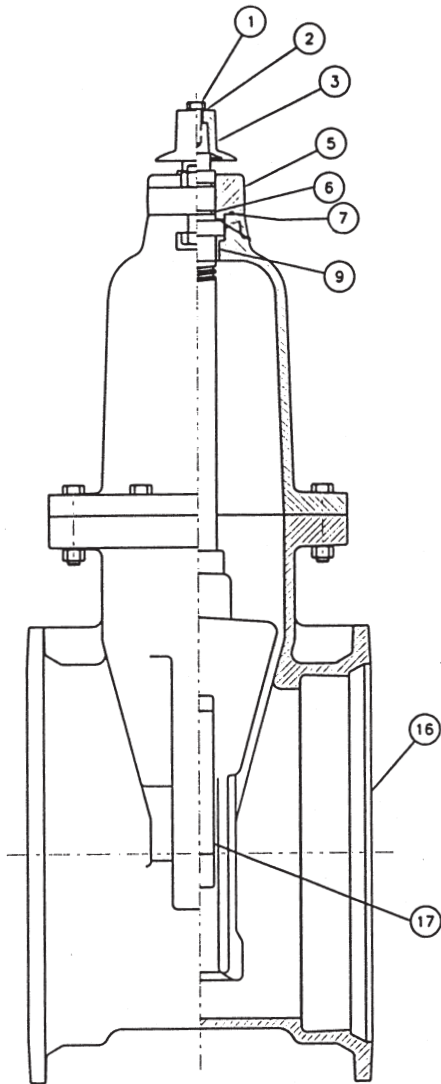


Complies with applicable requirements of AWWA C515

14"-16" R/W VALVE
NRS ASSEMBLY MATERIAL LIST

KENNEDY VALVE COMPANY

MODEL 2638



ITEM	DESCRIPTION	MATERIAL
1	HEX HEAD BOLTS	304 STAINLEES STEEL
2	FLAT WASHERS	304 STAINLEES STEEL
3	OPERATING NUT OR HANDWHEEL	CAST IRON
4	HEX HEAD BOLTS&NUTS	304 STAINLEES STEEL
5	FOLLOWER PLATE	DUCTILE IRON
6	STEM O-RING	RUBBER
7	FOLLOWER PLATE O'RING	RUBBER
9	BONNET BUSHING	COPPER ALLOY
10	STEM	COPPER ALLOY
11	HEX HEAD BOLTS&NUTS	304 STAINLEES STEEL
12	COVER	DUCTILE IRON
13	COVER O-RING	RUBBER
14	STEM NUT	COPPER ALLOY
15	WEDGE	DUCTILE IRON / RUBBER
16	BODY - ALL TYPES	DUCTILE IRON
17	WEDGE PROTECTOR CAP-18"-THRU 24"	DELTRIN

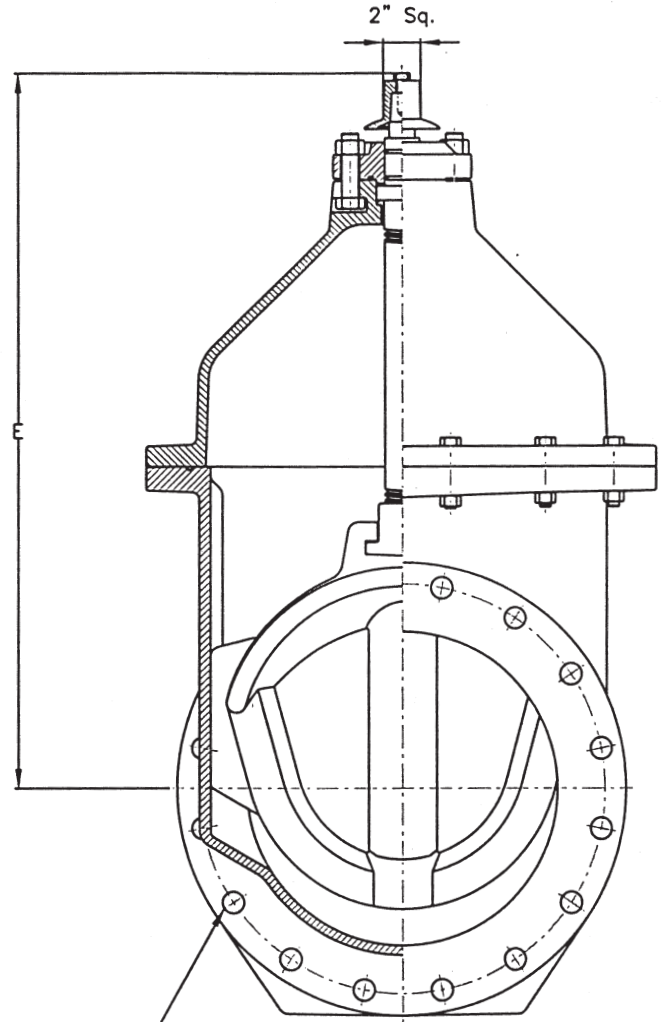
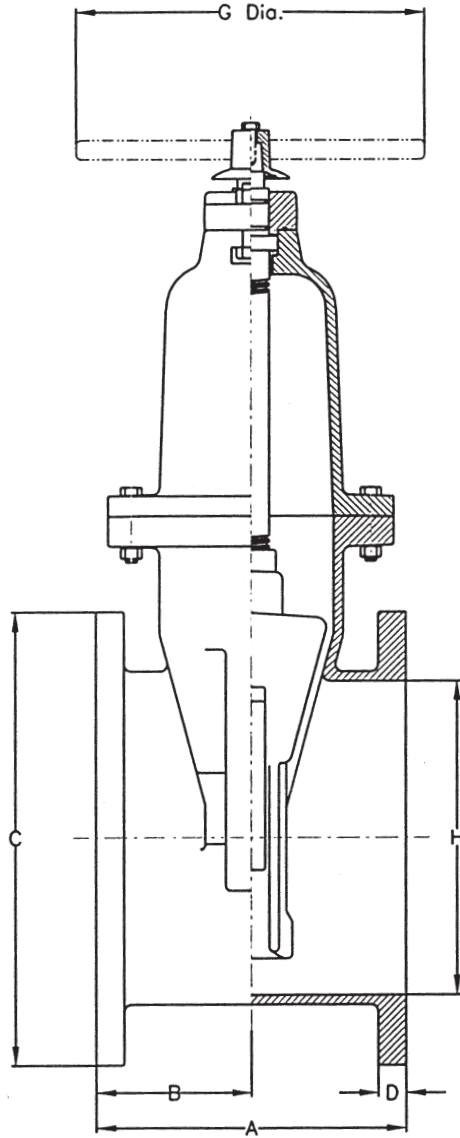
Complies with applicable requirements of AWWA C515

14"-16" R/W VALVE FLANGED ENDS
GENERAL DIMENSION

KENNEDY VALVE COMPANY

MODEL 2638

F-6102



F No. & size of bolts
Drilling per ANSI B16.1 class 125

VALVE SIZE	A	B	C	D	E	F	G	H
14	15	7.5	21	1.38	37.75	12-1	26	14.25
16	16	8	23.5	1.44	37.75	16-1	26	16.25

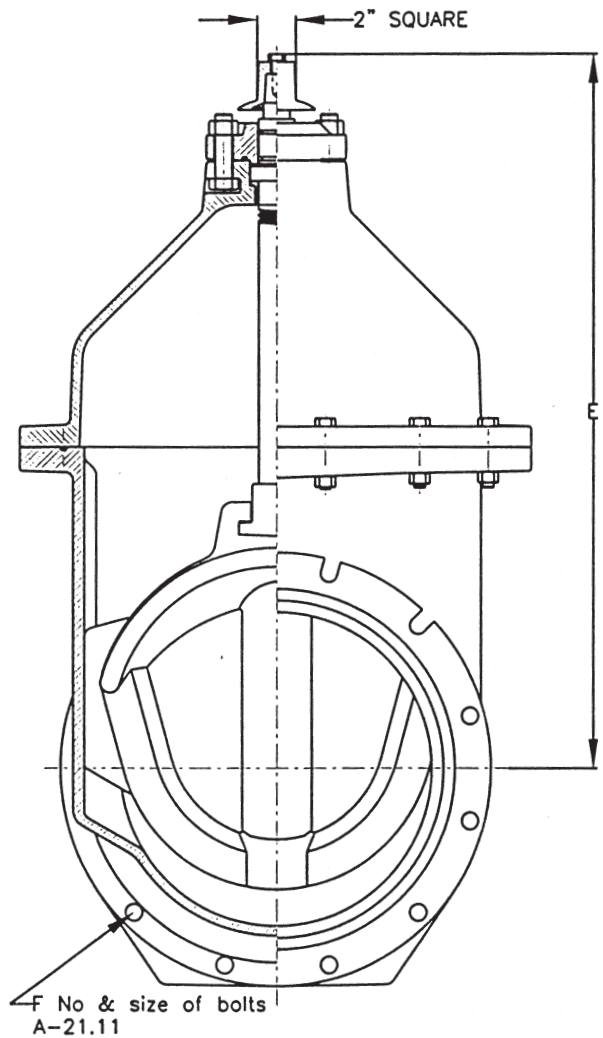
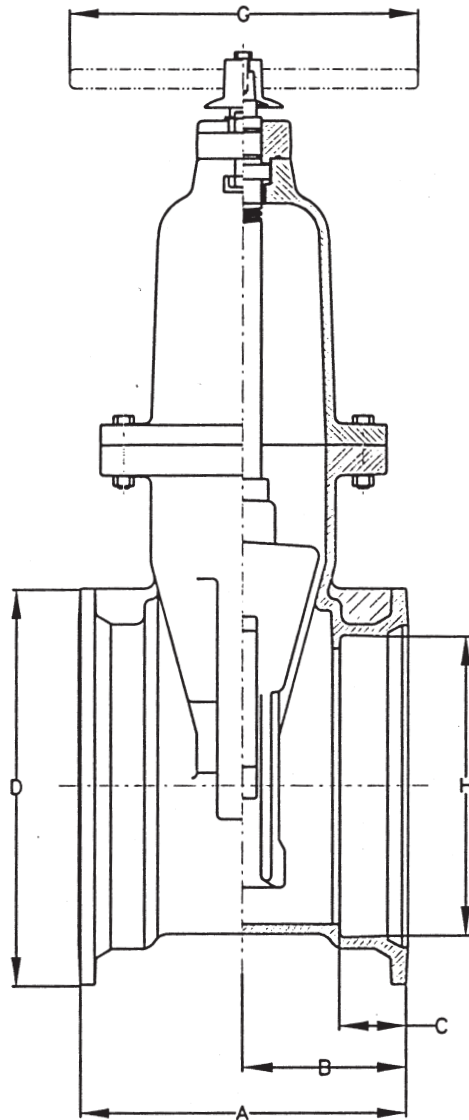
Complies with applicable requirements of AWWA C515

14"-16" R/W VALVE MJ ENDS
GENERAL DIMENSION

KENNEDY VALVE COMPANY

MODEL 2638

F-6100



VALVE SIZE	A	B	C	D	E	F	G	H
14	17	8.5	3.5	20.25	37.75	10 ^{-3/4}	18	14 ^{1/4}
16	17	8.5	3.5	22.5	37.75	12 ^{-3/4}	18	16 ^{1/4}

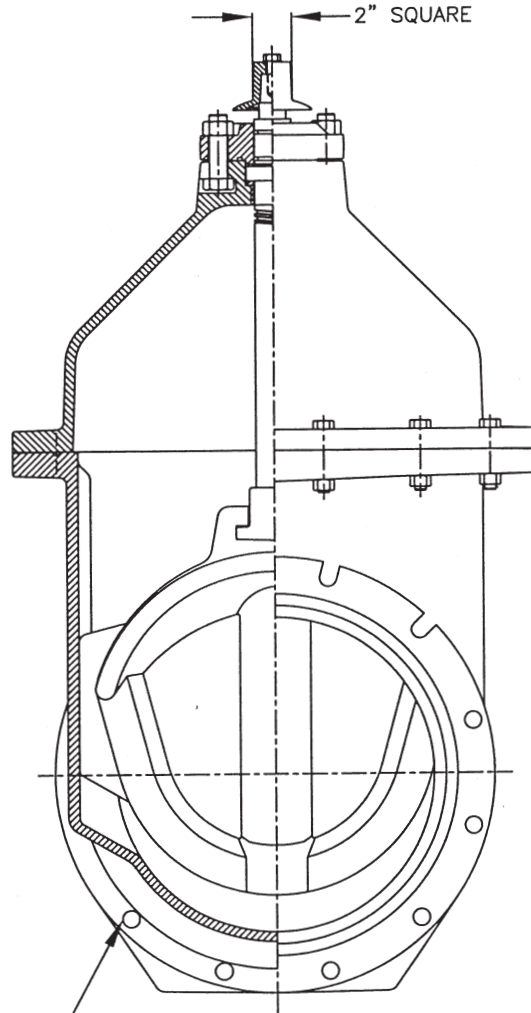
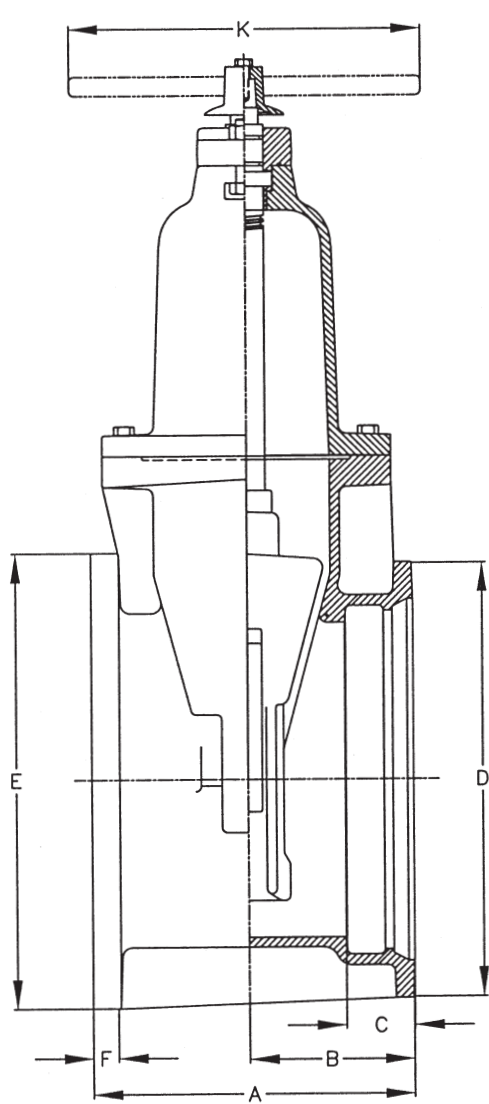
Complies with applicable requirements of AWWA C515

14"-16" R/W VALVE FLANGE X MJ ENDS
GENERAL DIMENSION

KENNEDY VALVE COMPANY

MODEL 2638

F-6106



No. & size of bolts
H- Flange Ends per ANSI B16.1
J- MJ End per A21.1

VALVE SIZE	A	B	C	D	E	F	G	H	J	K
14	17	8.5	3.5	20.25	21	1.38	37.75	12-1	10-3/4	18
16	16.5	8.5	3.5	22.5	23.5	1.50	37.75	16-1	12-3/4	18

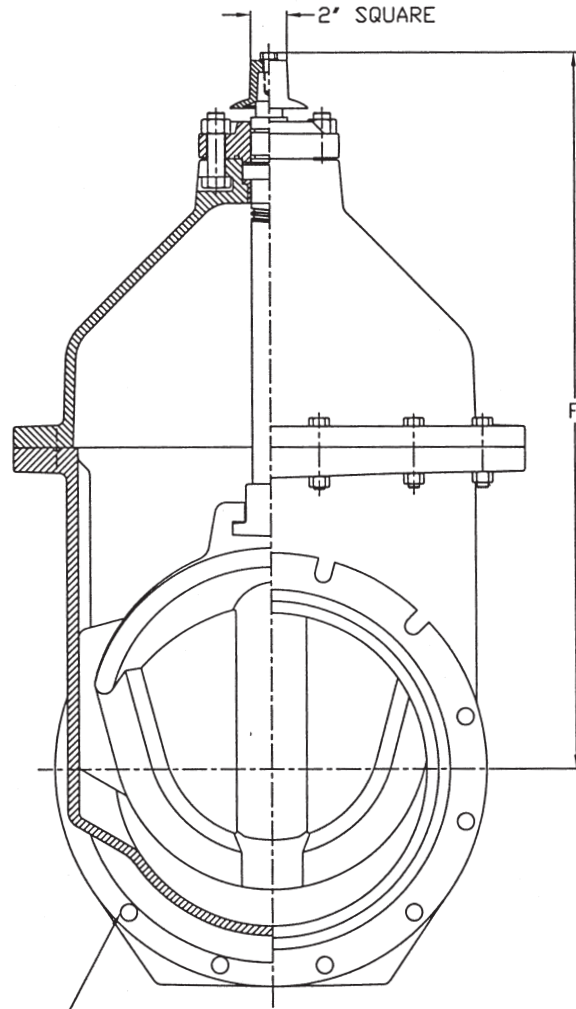
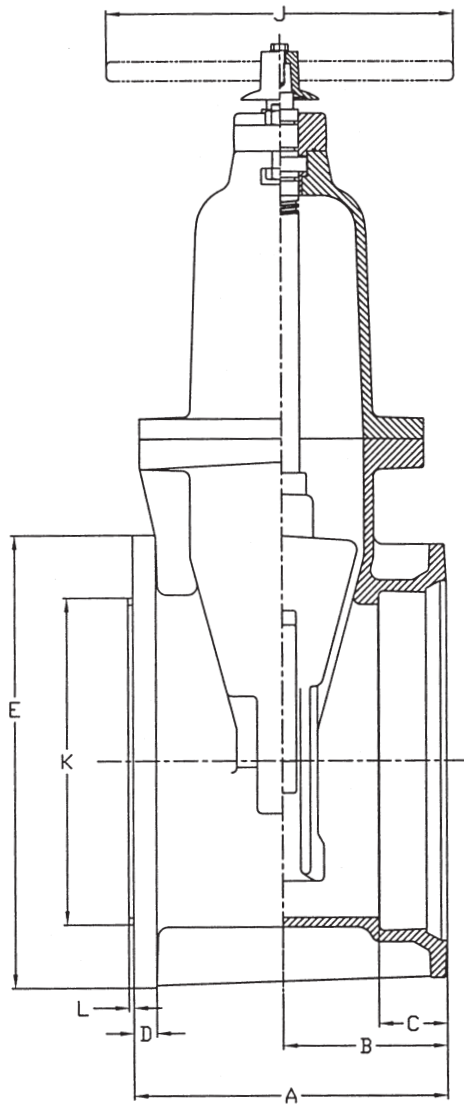
Complies with applicable requirements of AWWA C515

14"-16" R/W VALVE
MJ TAPPING GENERAL DIMENSION

KENNEDY VALVE COMPANY

MODEL 2638

F-6114



No. & size of bolts
G—Flange Ends per ANSI B16.1
H—MJ Ends per A21.1

VALVE SIZE	A	B	C	D	E	F	G	H	J	K	L
14	16.75	8.5	3.5	1.18	21	37.75	21-1	10-3/4	18	14 ¹⁵ / ₁₆	1/4
16	16.25	8.5	3.5	1.25	23.5	37.75	16-1	12-3/4	18	16 ¹⁵ / ₁₆	1/4

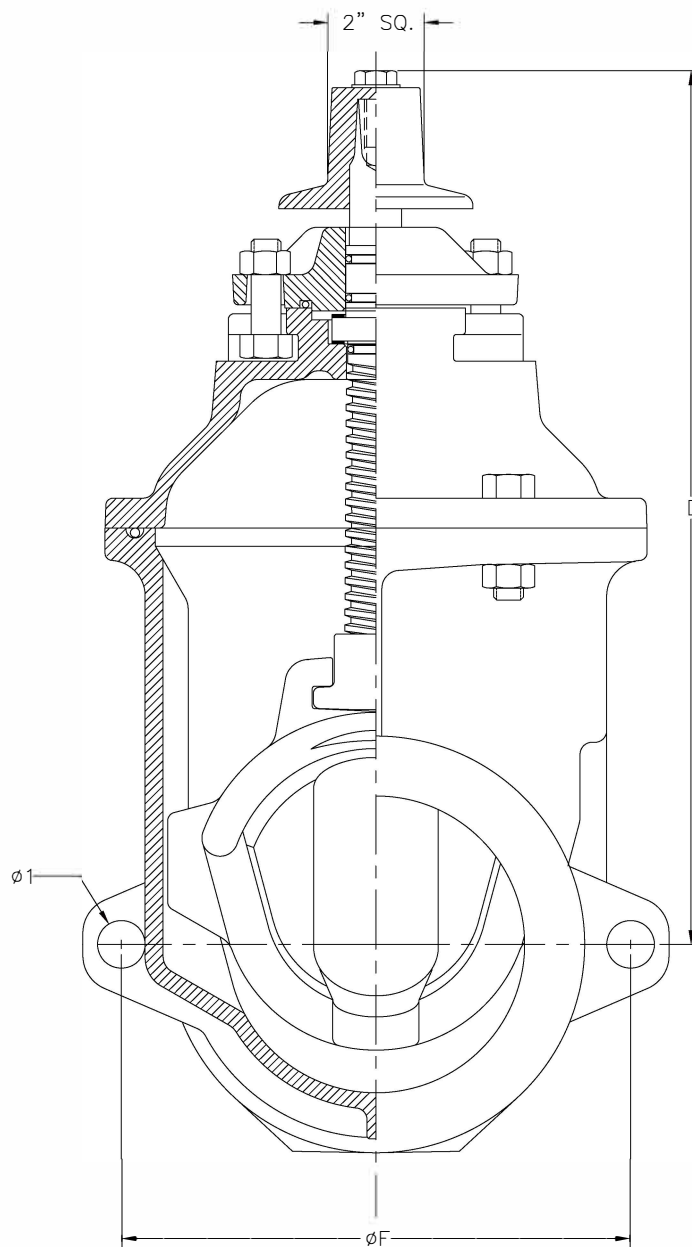
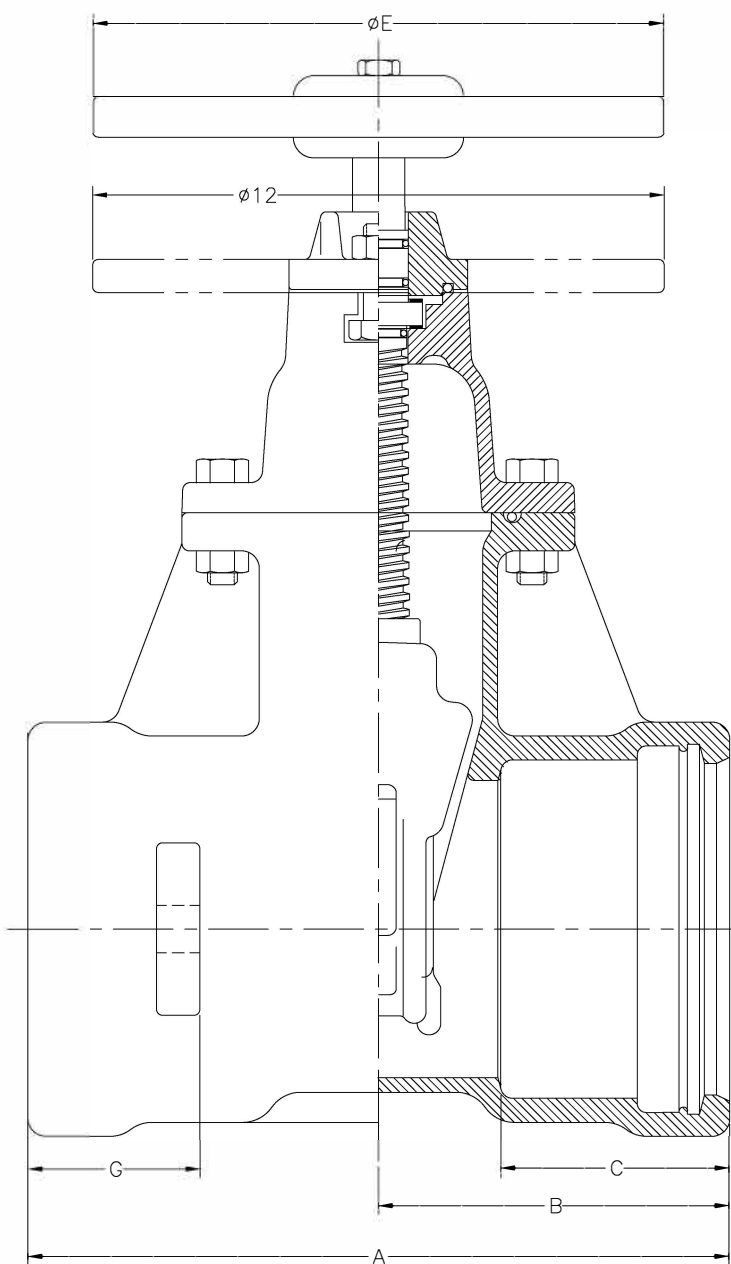
EACH SIZE ACCOMMODATES A FULL SIZE DIA TAPPING CUTTER

Complies with applicable requirements of AWWA C515

4"-16" R/W VALVE TYTON ENDS
NRS GENERAL DIMENSIONS

KENNEDY VALVE COMPANY

MODEL 2638



VALVE SIZE	A	B	C	D	E	F	G
4	13 1/4	6 5/8	4.34	14 3/4	10	8.18	3 3/4
6	14 3/4	7 3/8	4.75	19	12	10.88	3 3/4
8	17 1/8	8 9/16	5.70	22 1/2	14	12.88	4 1/2
10	19 3/8	9 11/16	6.19	26 1/2	18	15.94	5 1/8
12	20 7/8	10 7/16	6.19	30	18	18.44	5 3/8
14	21	10 1/2	5	38 3/4	26	22.30	2 1/2
16	24 1/16	12 1/32	6.78	37 3/4	26	22.46	2 1/2

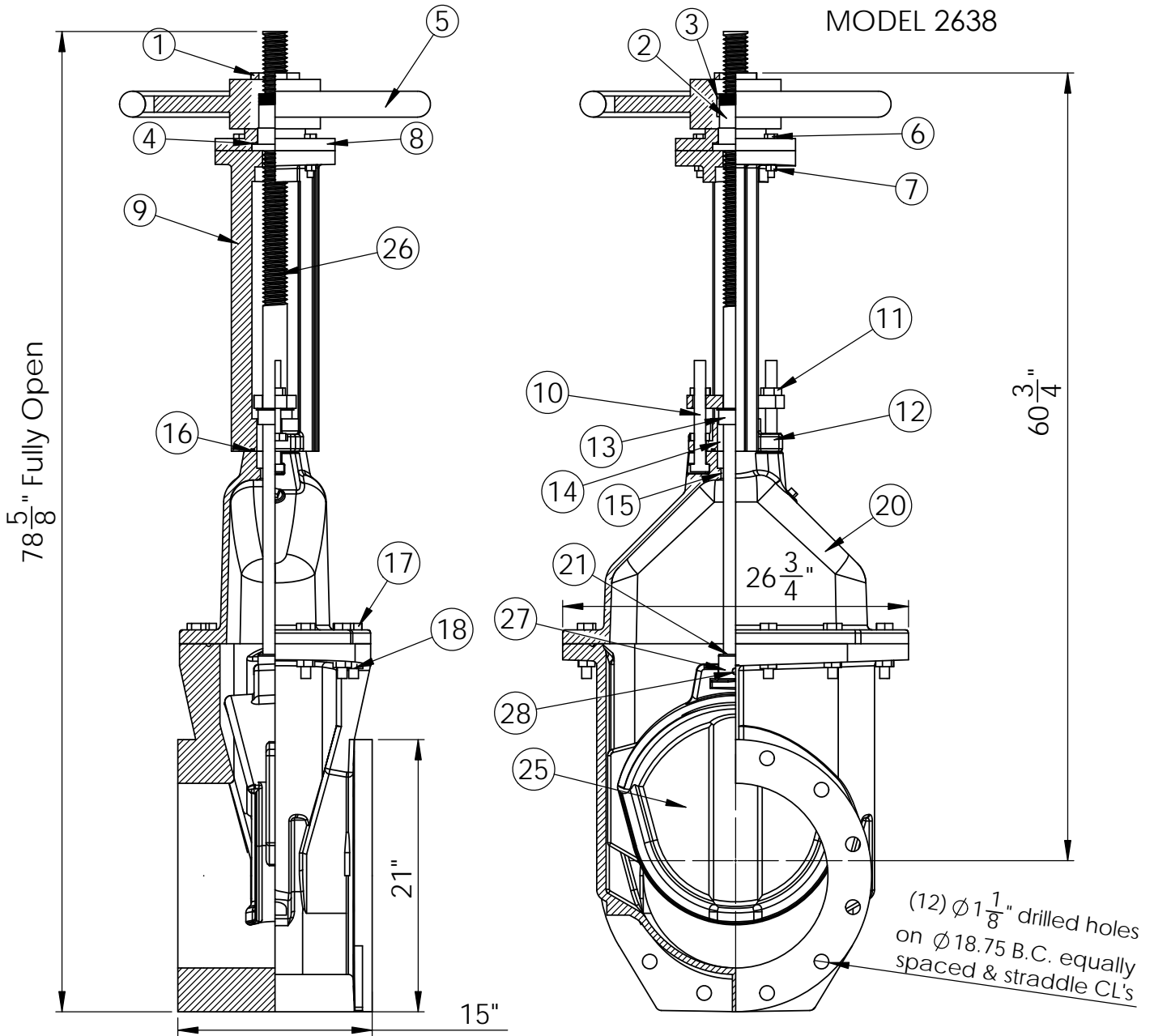
2638-209
- 02/18

COMPLIES WITH APPLICABLE
REQUIREMENTS OF AWWA C515

14" RW VALVE ULM OS&Y ASSEMBLY
FLANGE ENDS
GENERAL DIMENSIONS & MATERIAL LIST

KENNEDY VALVE COMPANY

MODEL 2638



ITEM	DESCRIPTION	MATERIAL	ITEM	DESCRIPTION	MATERIAL
1	HOLD DOWN NUT	COPPER ALLOY	15	BUSHING	COPPER ALLOY
2	TOP STEM NUT	COPPER ALLOY	16	ORING	EPDM
3	KEY	STEEL	17	HEX CAPSCREW	STAINLESS STEEL
4	WASHER	DELFIN	18	HEX NUT	STAINLESS STEEL
5	HANDWHEEL	DUCTILE IRON	19	ORING	EPDM
6	HEX CAPSCREW	STAINLESS STEEL	20	COVER	DUCTILE IRON
7	HEX NUT	STAINLESS STEEL	21	ORING	EPDM
8	ADAPTER PLATE	DUCTILE IRON	22	BODY	DUCTILE IRON
9	YOKE	DUCTILE IRON	23	HEX CAPSCREW	STAINLESS STEEL
10	STUD BOLT	STAINLESS STEEL	24	HEX NUT	STAINLESS STEEL
11	HEX NUT	COPPER ALLOY	25	WEDGE	DUCTILE IRON & EPDM
12	FOLLOWER PLATE	GRAY IRON	26	STEM	STAINLESS STEEL
13	GLAND	COPPER ALLOY	27	BOTTOM STEM NUT	COPPER ALLOY
14	PACKING	BRAIDED POLYMER	28	PIN	STAINLESS STEEL

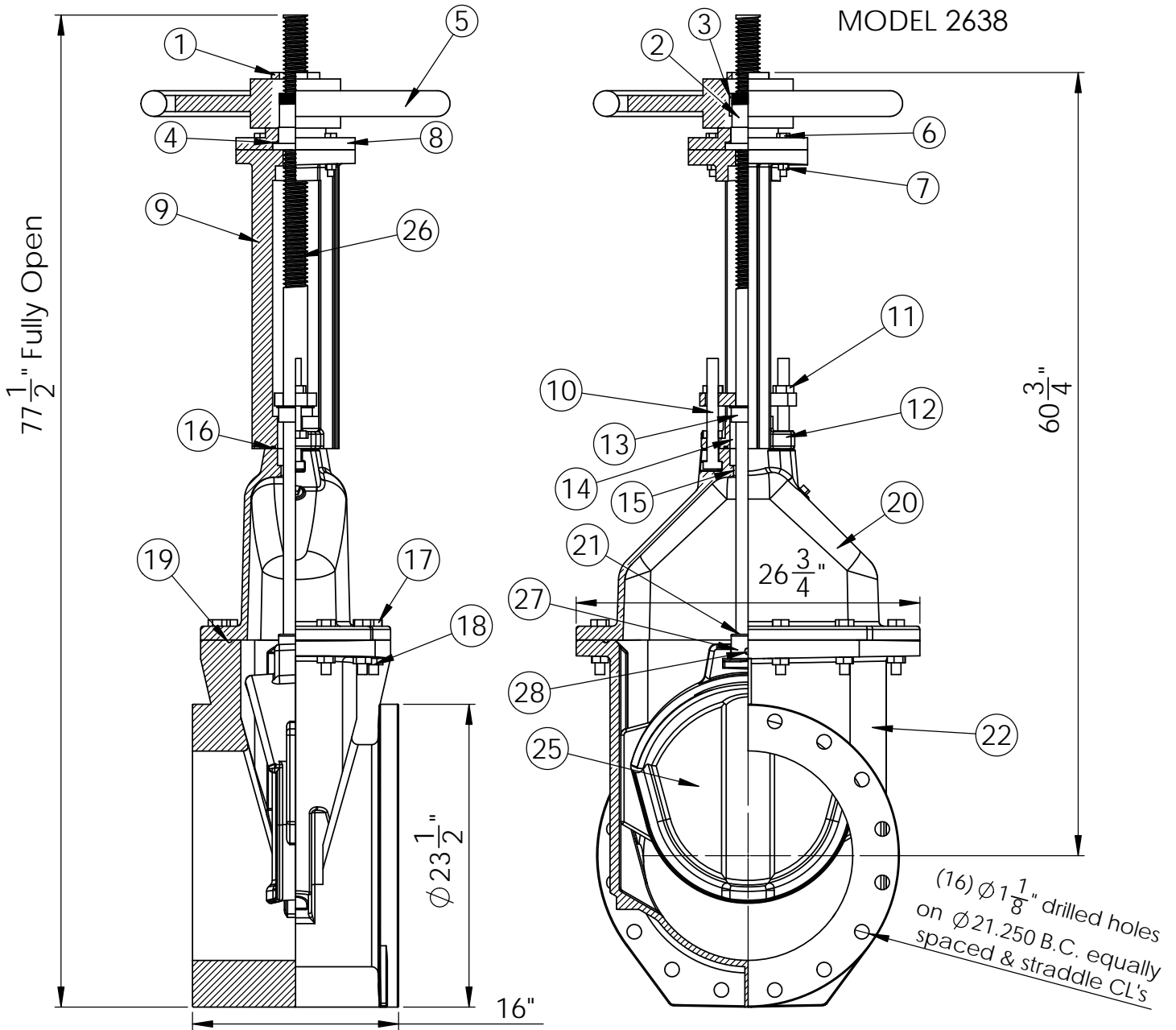
2638-208
- 02/18

COMPLIES WITH APPLICABLE
REQUIREMENTS OF AWWA C515

16" RW VALVE UFM OS&Y ASSEMBLY
FLANGE ENDS
GENERAL DIMENSIONS & MATERIAL LIST

KENNEDY VALVE COMPANY

MODEL 2638



ITEM	DESCRIPTION	MATERIAL	ITEM	DESCRIPTION	MATERIAL
1	HOLD DOWN NUT	COPPER ALLOY	15	BUSHING	COPPER ALLOY
2	TOP STEM NUT	COPPER ALLOY	16	ORING	EPDM
3	KEY	STEEL	17	HEX CAPSCREW	STAINLESS STEEL
4	WASHER	DELRIN	18	HEX NUT	STAINLESS STEEL
5	HANDWHEEL	DUCTILE IRON	19	ORING	EPDM
6	HEX CAPSCREW	STAINLESS STEEL	20	COVER	DUCTILE IRON
7	HEX NUT	STAINLESS STEEL	21	ORING	EPDM
8	ADAPTER PLATE	DUCTILE IRON	22	BODY	DUCTILE IRON
9	YOKE	DUCTILE IRON	23	HEX CAPSCREW	STAINLESS STEEL
10	STUD BOLT	STAINLESS STEEL	24	HEX NUT	STAINLESS STEEL
11	HEX NUT	COPPER ALLOY	25	WEDGE	DUCTILE IRON & EPDM
12	FOLLOWER PLATE	GRAY IRON	26	STEM	STAINLESS STEEL
13	GLAND	COPPER ALLOY	27	BOTTOM STEM NUT	COPPER ALLOY
14	PACKING	BRAIDED POLYMER	28	PIN	STAINLESS STEEL

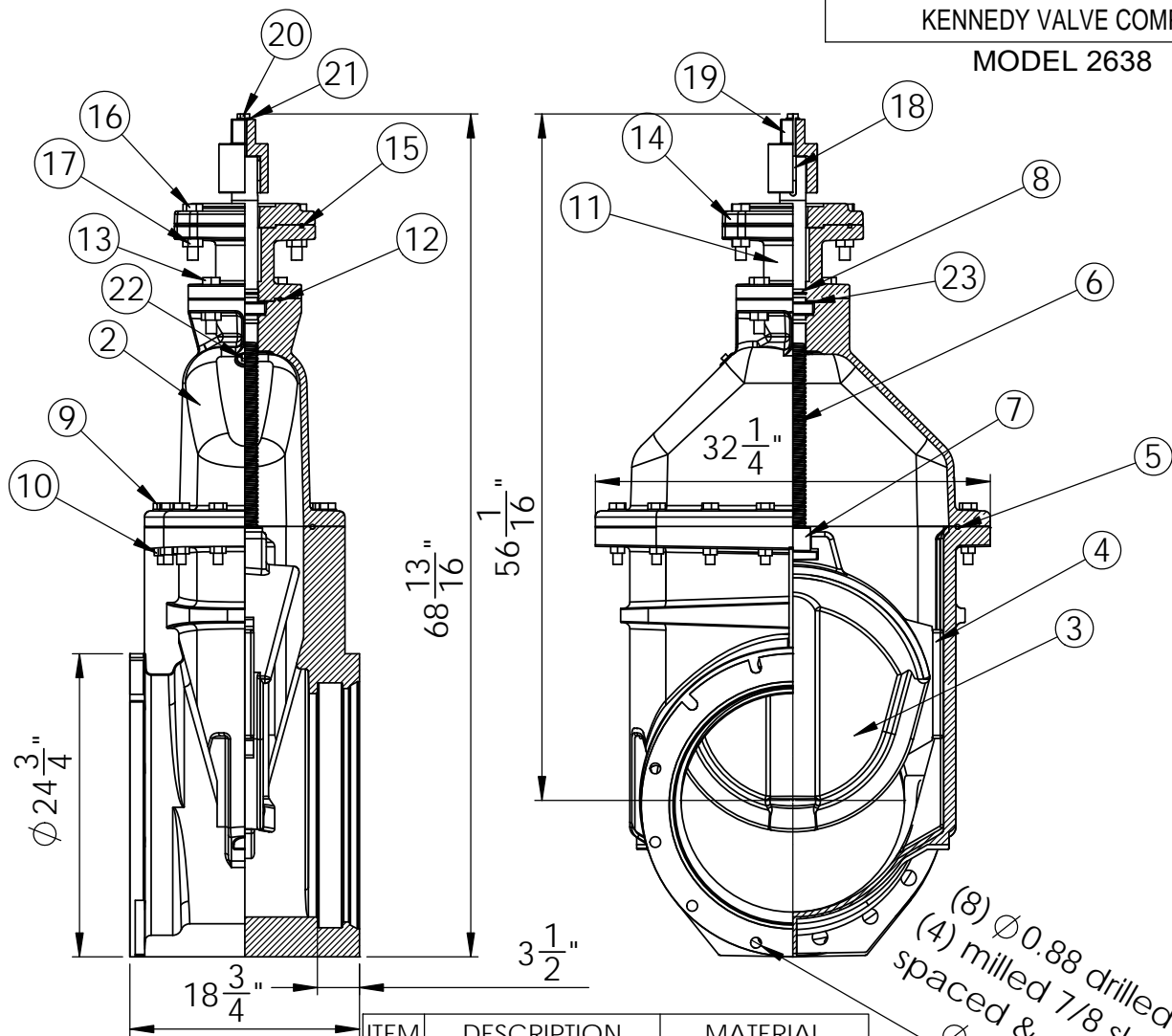
2638-205
- 02/18

COMPLIES WITH APPLICABLE
REQUIREMENTS OF AWWA C515

18" RW VALVE ULFM NRS ASSEMBLY
MECHANICAL JOINT ENDS
GENERAL DIMENSIONS & MATERIAL LIST

KENNEDY VALVE COMPANY

MODEL 2638



ITEM	DESCRIPTION	MATERIAL
1	BODY	DUCTILE IRON
2	COVER	DUCTILE IRON
3	WEDGE	EPDM RUBBER
4	WEDGE CAP	DELTRIN
5	ORING	EPDM RUBBER
6	STEM	STAINLESS STEEL
7	STEM NUT	COPPER ALLOY
8	ORING	EPDM RUBBER
9	HEX HEAD BOLT	STAINLESS STEEL
10	HEX NUT	STAINLESS STEEL
11	EXTENSION	DUCTILE IRON
12	ORING	EPDM RUBBER
13	HEX HEAD BOLT	STAINLESS STEEL
14	INDICATOR ADAPTOR PLATE	DUCTILE IRON
15	ORING	EPDM RUBBER
16	HEX BOLT	STAINLESS STEEL
17	HEX NUT	STAINLESS STEEL
18	KEY	STEEL
19	OP NUT	GREY IRON
20	BOLT	STAINLESS STEEL
21	WASHER	STAINLESS STEEL
22	PIPE PLUG	STAINLESS STEEL
23	THRUST WASHER	DELTRIN

(8) ϕ 0.88 drilled holes &
(4) milled 7/8 slots, equally
spaced & straddle CL's on
 ϕ 23.25 \pm .060 B.C.

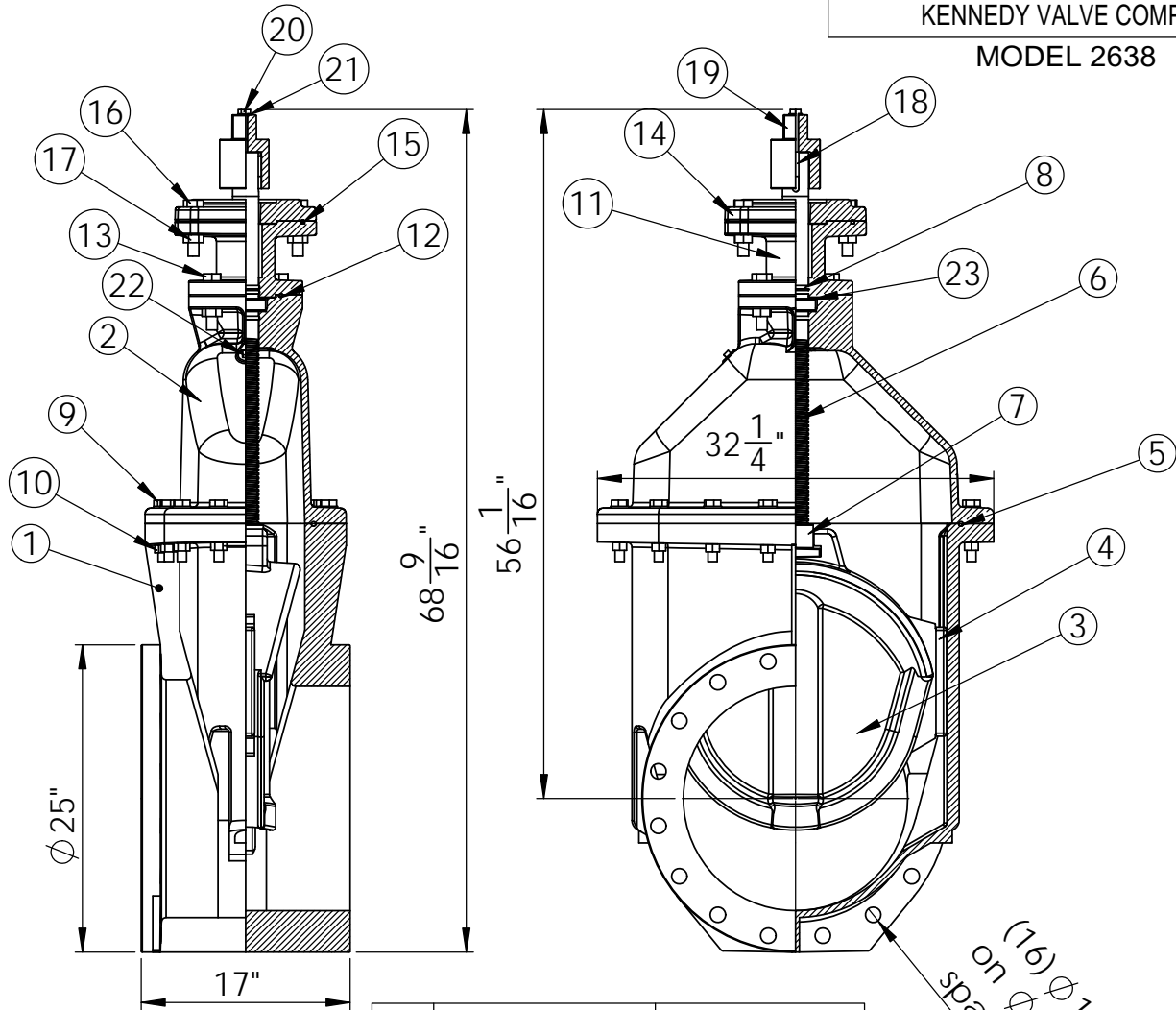
2638-186
A 02/18

COMPLIES WITH APPLICABLE
REQUIREMENTS OF AWWA C515

18" RW VALVE ULFM NRS ASSEMBLY
FLANGE ENDS
GENERAL DIMENSIONS & MATERIAL LIST

KENNEDY VALVE COMPANY

MODEL 2638



ITEM	DESCRIPTION	MATERIAL
1	BODY	DUCTILE IRON
2	COVER	DUCTILE IRON
3	WEDGE	EPDM RUBBER
4	WEDGE CAP	DELFIN
5	ORING	EPDM RUBBER
6	STEM	STAINLESS STEEL
7	STEM NUT	COPPER ALLOY
8	ORING	EPDM RUBBER
9	HEX HEAD BOLT	STAINLESS STEEL
10	HEX NUT	STAINLESS STEEL
11	EXTENSION	DUCTILE IRON
12	ORING	EPDM RUBBER
13	HEX HEAD BOLT	STAINLESS STEEL
14	INDICATOR ADAPTOR PLATE	DUCTILE IRON
15	ORING	EPDM RUBBER
16	HEX BOLT	STAINLESS STEEL
17	HEX NUT	STAINLESS STEEL
18	KEY	STEEL
19	OP NUT	GREY IRON
20	BOLT	STAINLESS STEEL
21	WASHER	STAINLESS STEEL
22	PIPE PLUG	STAINLESS STEEL
23	THRUST WASHER	DELFIN

(16) \varnothing 1.25 Drilled Holes
on \varnothing 22.75 B.C. equally
spaced & straddle C/L's

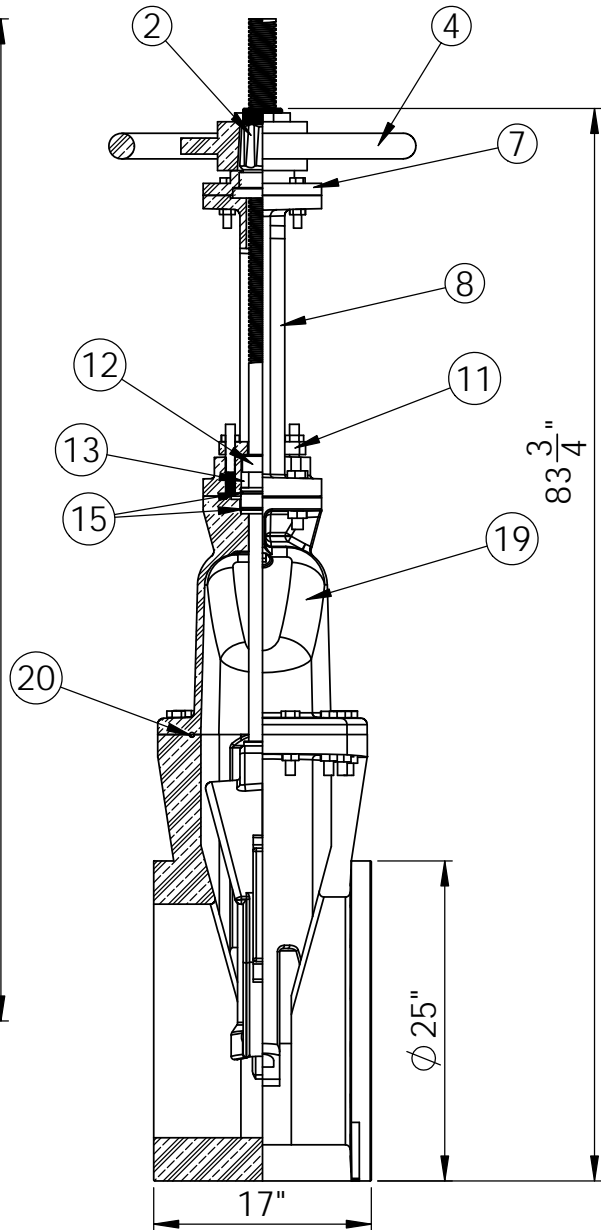
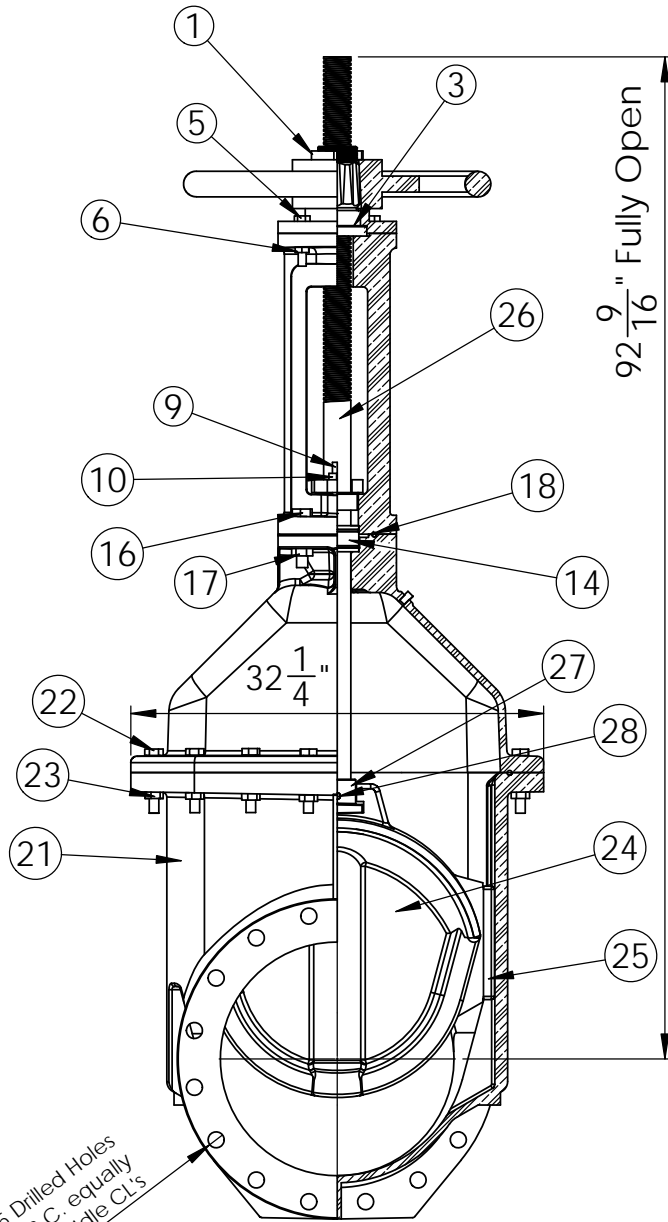
2638-190
A 02/18

COMPLIES WITH APPLICABLE
REQUIREMENTS OF AWWA C515

18" RW VALVE ULFM OS&Y ASSEMBLY
FLANGE ENDS
GENERAL DIMENSIONS & MATERIAL LIST

KENNEDY VALVE COMPANY

MODEL 2638



(16) ϕ 1.25 Drilled Holes
on ϕ 22.75 B.C. equally
spaced & straddle C.L's

ITEM	DESCRIPTION	MATERIAL	ITEM	DESCRIPTION	MATERIAL
1	HOLD DOWN NUT	COPPER ALLOY	15	ORING	EPDM
2	TOP STEM NUT	COPPER ALLOY	16	HEX CAPSCREW	STAINLESS STEEL
3	WASHER	DELRIN	17	HEX NUT	STAINLESS STEEL
4	HANDWHEEL	DUCTILE IRON	18	ORING	EPDM
5	HEX CAPSCREW	STAINLESS STEEL	19	COVER	DUCTILE IRON
6	HEX NUT	STAINLESS STEEL	20	ORING	EPDM
7	ADAPTER PLATE	DUCTILE IRON	21	BODY	DUCTILE IRON
8	YOKE	DUCTILE IRON	22	HEX CAPSCREW	STAINLESS STEEL
9	STUD BOLT	STAINLESS STEEL	23	HEX NUT	STAINLESS STEEL
10	HEX NUT	COPPER ALLOY	24	WEDGE	DUCTILE IRON & EPDM
11	FOLLOWER PLATE	GRAY IRON	25	WEDGE CAP	DELRIN
12	GLAND	COPPER ALLOY	26	STEM	STAINLESS STEEL
13	PACKING	BRAIDED POLYMER	27	BOTTOM STEM NUT	COPPER ALLOY
14	BUSHING	COPPER ALLOY	28	PIN	STAINLESS STEEL

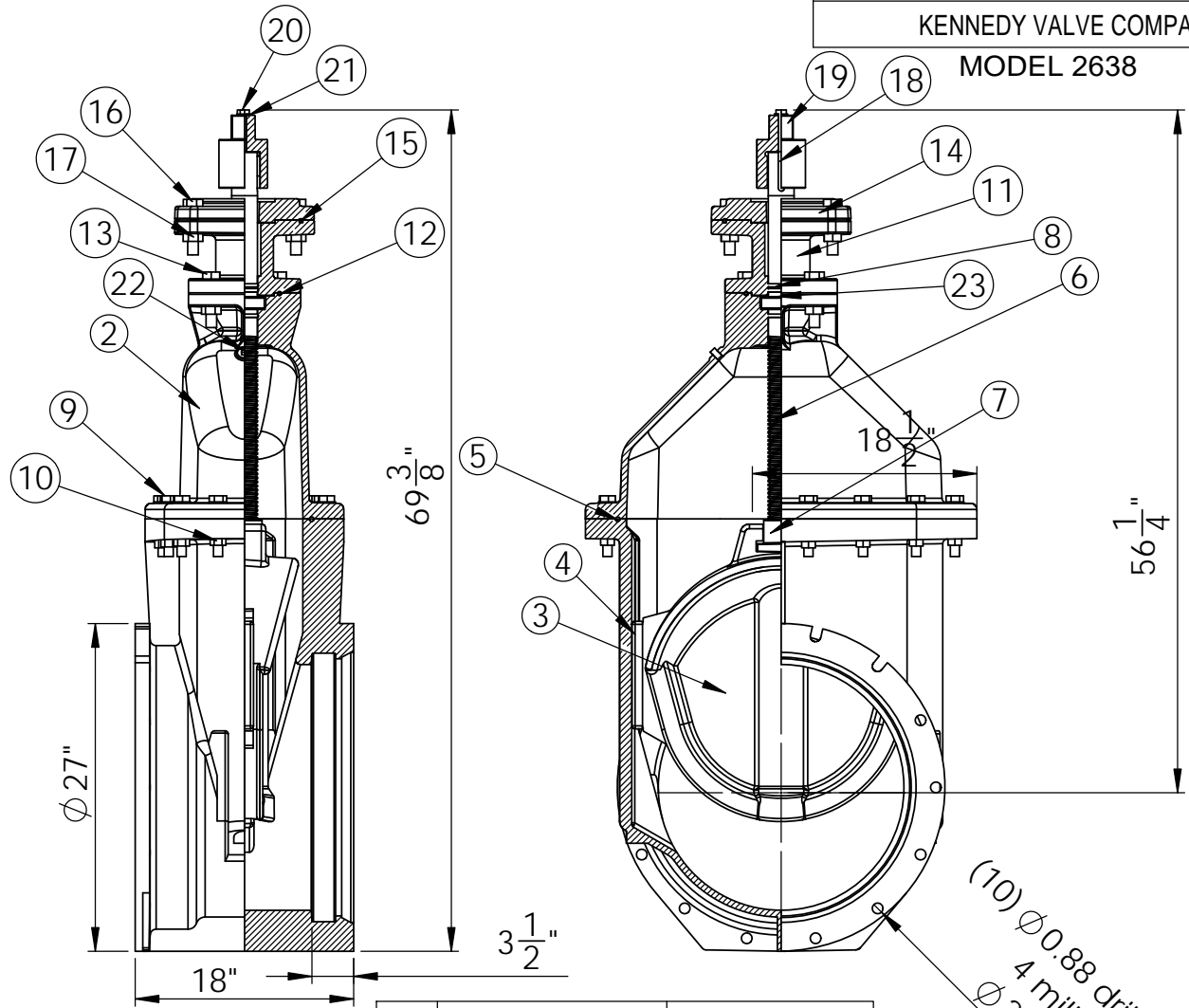
2638-206
- 02/18

COMPLIES WITH APPLICABLE
REQUIREMENTS OF AWWA C515

20" RW VALVE ULMF NRS ASSEMBLY
MECHANICAL JOINT ENDS
GENERAL DIMENSIONS & MATERIAL LIST

KENNEDY VALVE COMPANY

MODEL 2638



ITEM	DESCRIPTION	MATERIAL
1	BODY	DUCTILE IRON
2	COVER	DUCTILE IRON
3	WEDGE	EPDM RUBBER
4	WEDGE CAP	DELRIN
5	ORING	EPDM RUBBER
6	STEM	STAINLESS STEEL
7	STEM NUT	COPPER ALLOY
8	ORING	EPDM RUBBER
9	HEX HEAD BOLT	STAINLESS STEEL
10	HEX NUT	STAINLESS STEEL
11	EXTENSION	DUCTILE IRON
12	ORING	EPDM RUBBER
13	HEX HEAD BOLT	STAINLESS STEEL
14	INDICATOR ADAPTOR PLATE	DUCTILE IRON
15	ORING	EPDM RUBBER
16	HEX BOLT	STAINLESS STEEL
17	HEX NUT	STAINLESS STEEL
18	KEY	STEEL
19	OP NUT	GREY IRON
20	BOLT	STAINLESS STEEL
21	WASHER	STAINLESS STEEL
22	PIPE PLUG	STAINLESS STEEL
23	THRUST WASHER	DELRIN

(10) ϕ 0.88 drilled holes and
4 milled slots on
 ϕ 25.50 \pm 0.060 B.C.

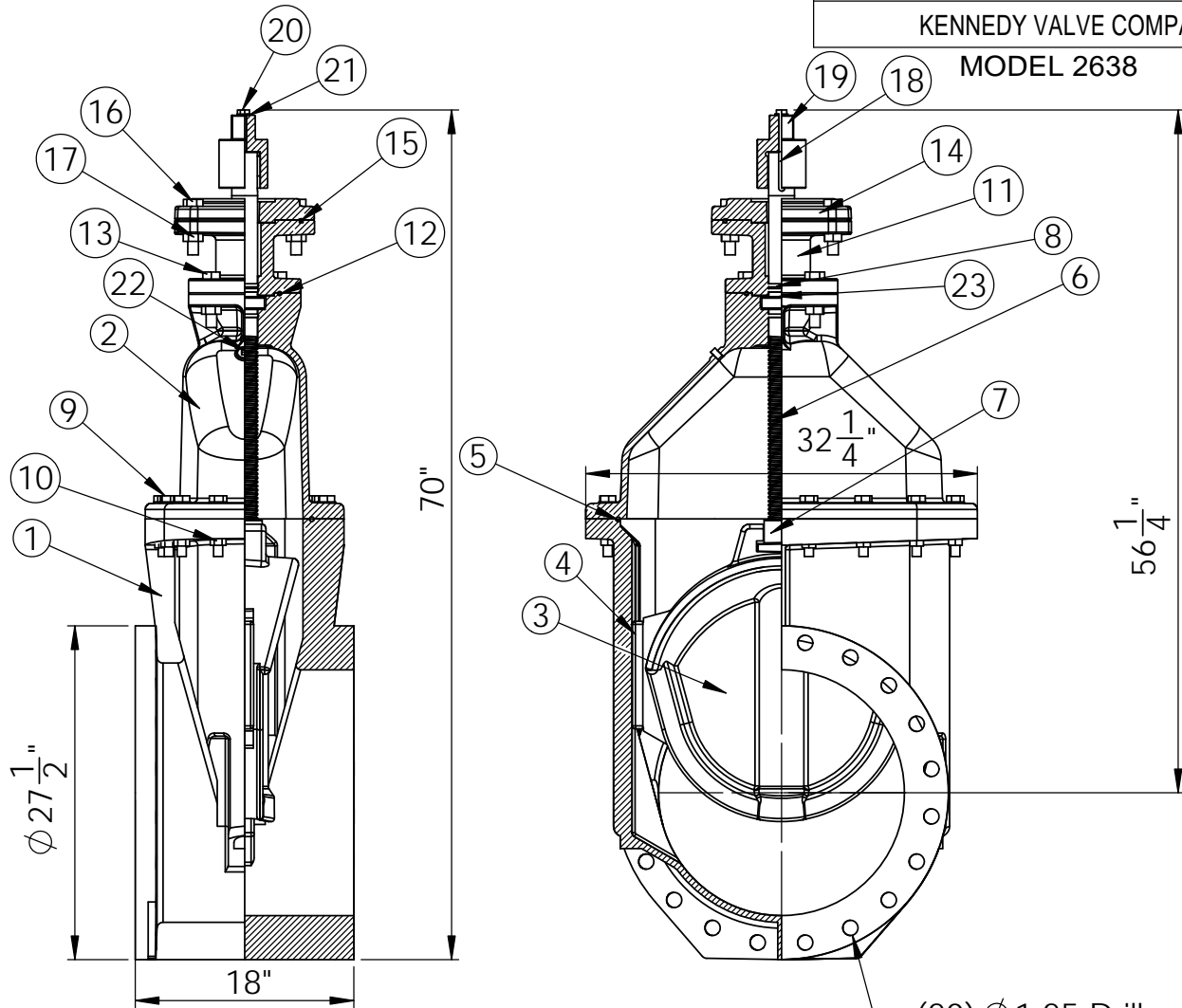
2638-187
A 02/18

COMPLIES WITH APPLICABLE
REQUIREMENTS OF AWWA C515

20" RW VALVE ULFM NRS ASSEMBLY
GENERAL DIMENSIONS & MATERIAL LIST

KENNEDY VALVE COMPANY

MODEL 2638



ITEM	DESCRIPTION	MATERIAL
1	BODY	DUCTILE IRON
2	COVER	DUCTILE IRON
3	WEDGE	EPDM RUBBER
4	WEDGE CAP	DELIN
5	ORING	EPDM RUBBER
6	STEM	STAINLESS STEEL
7	STEM NUT	COPPER ALLOY
8	ORING	EPDM RUBBER
9	HEX HEAD BOLT	STAINLESS STEEL
10	HEX NUT	STAINLESS STEEL
11	EXTENSION	DUCTILE IRON
12	ORING	EPDM RUBBER
13	HEX HEAD BOLT	STAINLESS STEEL
14	ADAPTOR PLATE	DUCTILE IRON
15	ORING	EPDM RUBBER
16	HEX BOLT	STAINLESS STEEL
17	HEX NUT	STAINLESS STEEL
18	KEY	STEEL
19	OP NUT	GREY IRON
20	BOLT	STAINLESS STEEL
21	WASHER	STAINLESS STEEL
22	PIPE PLUG	STAINLESS STEEL
23	THRUST WASHER	DELIN

(20) ϕ 1.25 Drilled Holes
on ϕ 25.00 B.C. equally
spaced & straddle CL's

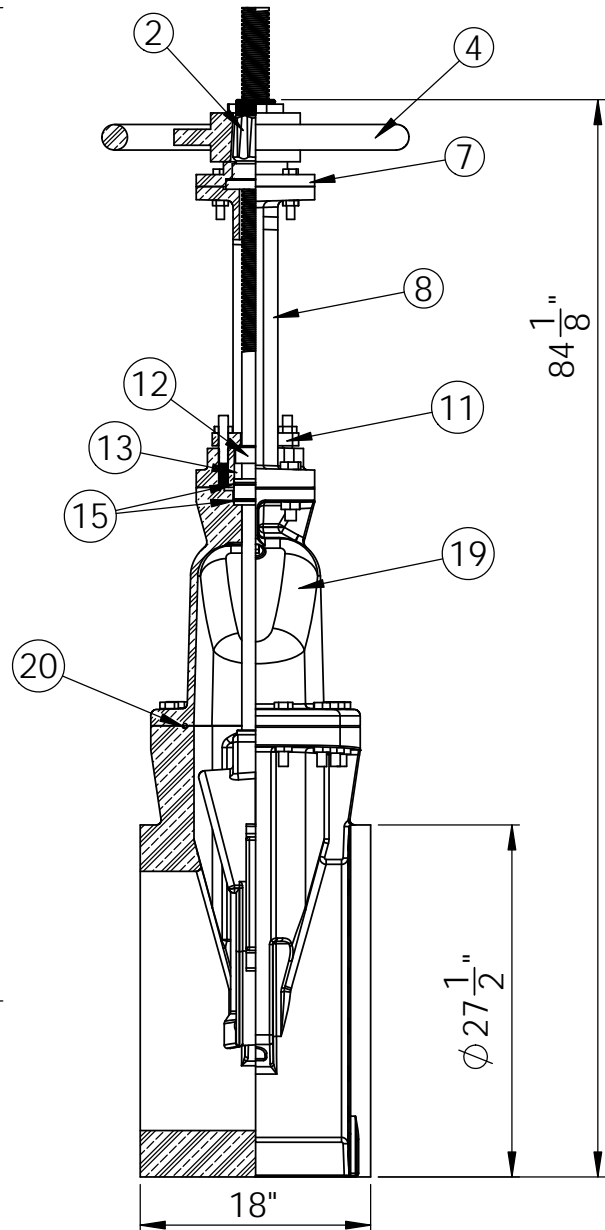
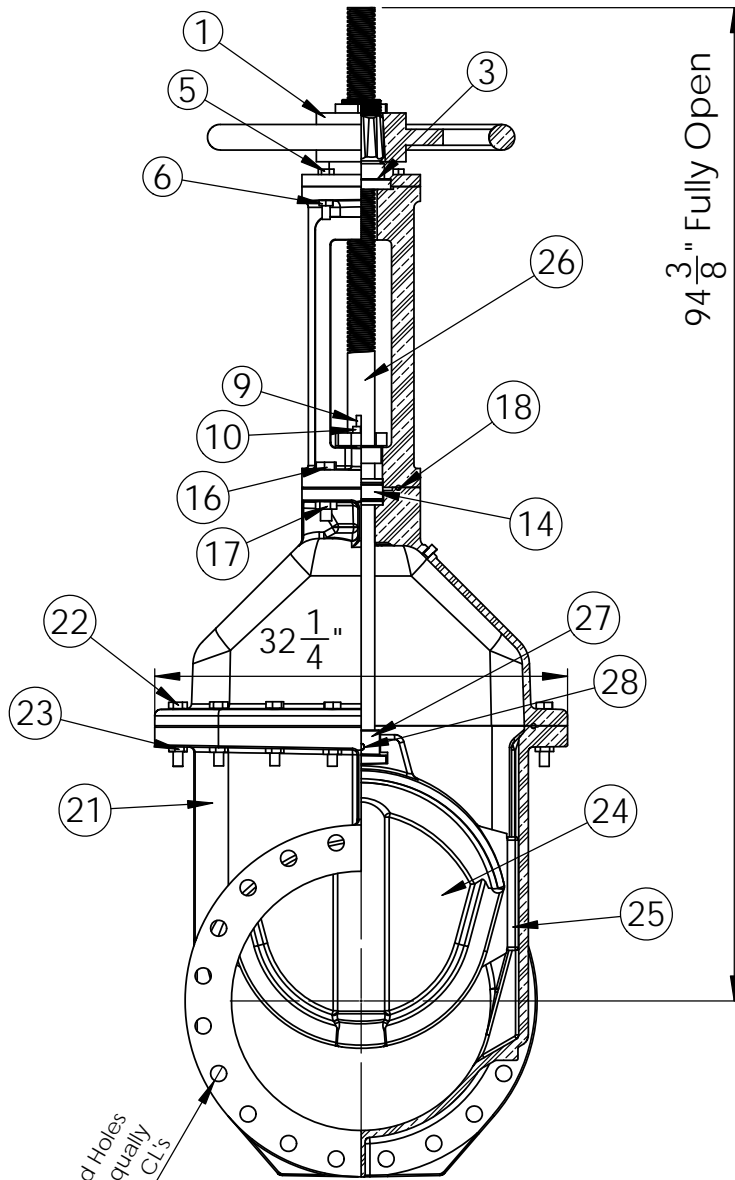
2638-191
A 02/18

COMPLIES WITH APPLICABLE
REQUIREMENTS OF AWWA C515

20" RW VALVE ULFM OS&Y ASSEMBLY
FLANGE ENDS
GENERAL DIMENSIONS & MATERIAL LIST

KENNEDY VALVE COMPANY

MODEL 2638



ITEM	DESCRIPTION	MATERIAL	ITEM	DESCRIPTION	MATERIAL
1	HOLD DOWN NUT	COPPER ALLOY	15	ORING	EPDM
2	TOP STEM NUT	COPPER ALLOY	16	HEX CAPSCREW	STAINLESS STEEL
3	WASHER	DELTRIN	17	HEX NUT	STAINLESS STEEL
4	HANDWHEEL	DUCTILE IRON	18	ORING	EPDM
5	HEX CAPSCREW	STAINLESS STEEL	19	COVER	DUCTILE IRON
6	HEX NUT	STAINLESS STEEL	20	ORING	EPDM
7	ADAPTER PLATE	DUCTILE IRON	21	BODY	DUCTILE IRON
8	YOKE	DUCTILE IRON	22	HEX CAPSCREW	STAINLESS STEEL
9	STUD BOLT	STAINLESS STEEL	23	HEX NUT	STAINLESS STEEL
10	HEX NUT	COPPER ALLOY	24	WEDGE	DUCTILE IRON & EPDM
11	FOLLOWER PLATE	GRAY IRON	25	WEDGE CAP	DELTRIN
12	GLAND	COPPER ALLOY	26	STEM	STAINLESS STEEL
13	PACKING	BRAIDED POLYMER	27	BOTTOM STEM NUT	COPPER ALLOY
14	BUSHING	COPPER ALLOY	28	PIN	STAINLESS STEEL

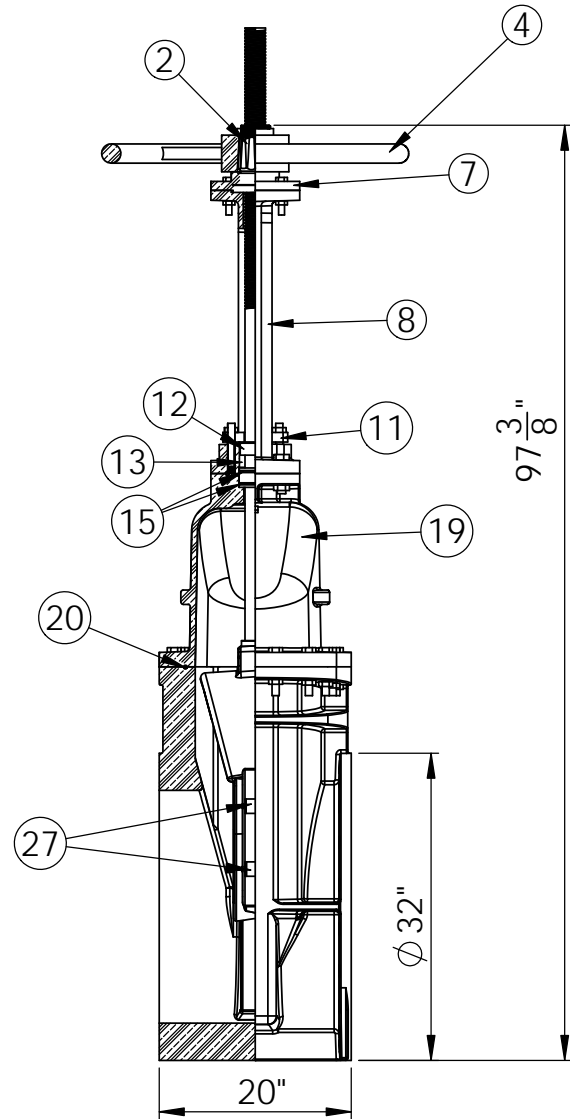
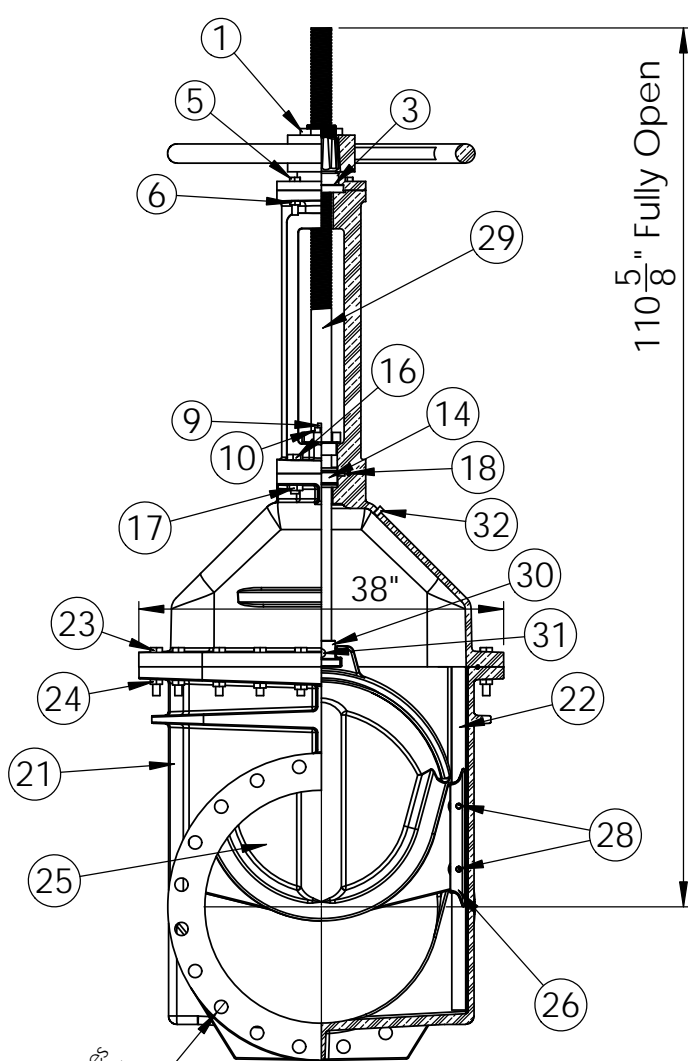
2638-192
A 02/18

COMPLIES WITH APPLICABLE
REQUIREMENTS OF AWWA C515

24" RW RTS ULFM OS&Y ASSEMBLY
FLANGE ENDS
GENERAL DIMENSIONS & MATERIAL LIST

KENNEDY VALVE COMPANY

MODEL 2638



(20) $\varnothing 1.38$ Drilled Holes
on $\varnothing 29.50$ B.C. equally
spaced & straddle C.L.s

ITEM	DESCRIPTION	MATERIAL	ITEM	DESCRIPTION	MATERIAL
1	HOLD DOWN NUT	COPPER ALLOY	17	HEX NUT	STAINLESS STEEL
2	TOP STEM NUT	COPPER ALLOY	18	ORING	EPDM
3	WASHER	DELRIN	19	COVER	DUCTILE IRON
4	HANDWHEEL	DUCTILE IRON	20	ORING	EPDM
5	HEX CAPSCREW	STAINLESS STEEL	21	BODY	DUCTILE IRON
6	HEX NUT	STAINLESS STEEL	22	TRACK	STAINLESS STEEL
7	ADAPTER PLATE	DUCTILE IRON	23	HEX CAPSCREW	STAINLESS STEEL
8	YOKE	DUCTILE IRON	24	HEX NUT	STAINLESS STEEL
9	STUD BOLT	STAINLESS STEEL	25	WEDGE	DUCTILE IRON & EPDM
10	HEX NUT	COPPER ALLOY	26	SCRAPER	COPPER ALLOY
11	FOLLOWER PLATE	GRAY IRON	27	ROLLER	COPPER ALLOY
12	GLAND	COPPER ALLOY	28	PIN	STAINLESS STEEL
13	PACKING	BRAIDED POLYMER	29	STEM	STAINLESS STEEL
14	BUSHING	COPPER ALLOY	30	BOTTOM STEM NUT	COPPER ALLOY
15	ORING	EPDM	31	PIN	STAINLESS STEEL
16	HEX CAPSCREW	STAINLESS STEEL	32	PIPE PLUG	STAINLESS STEEL

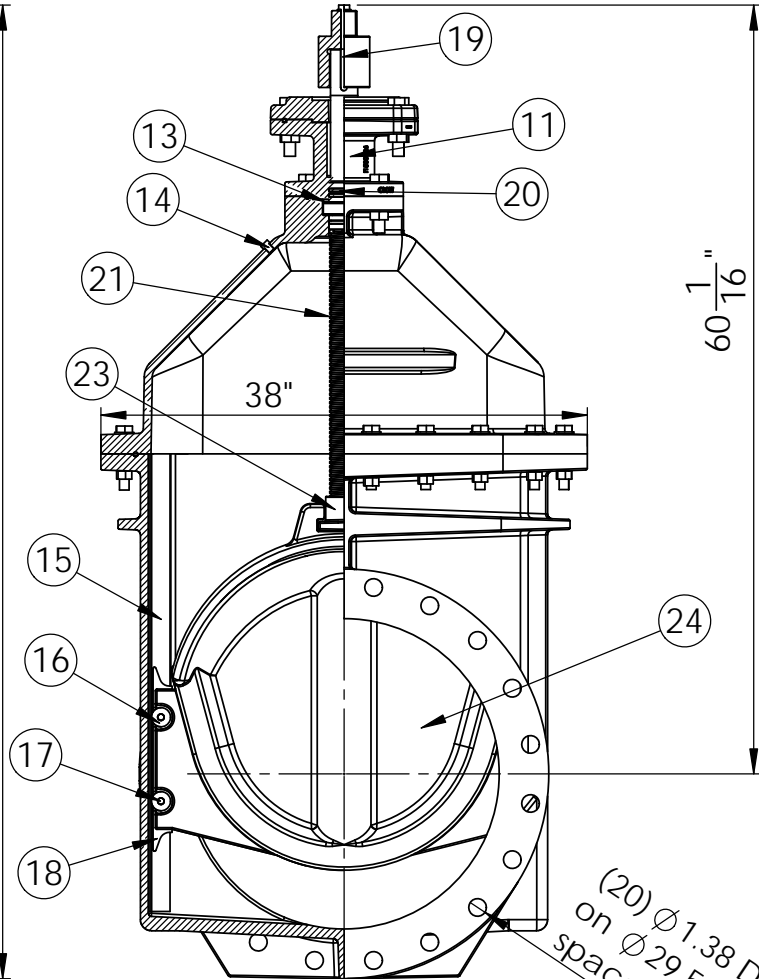
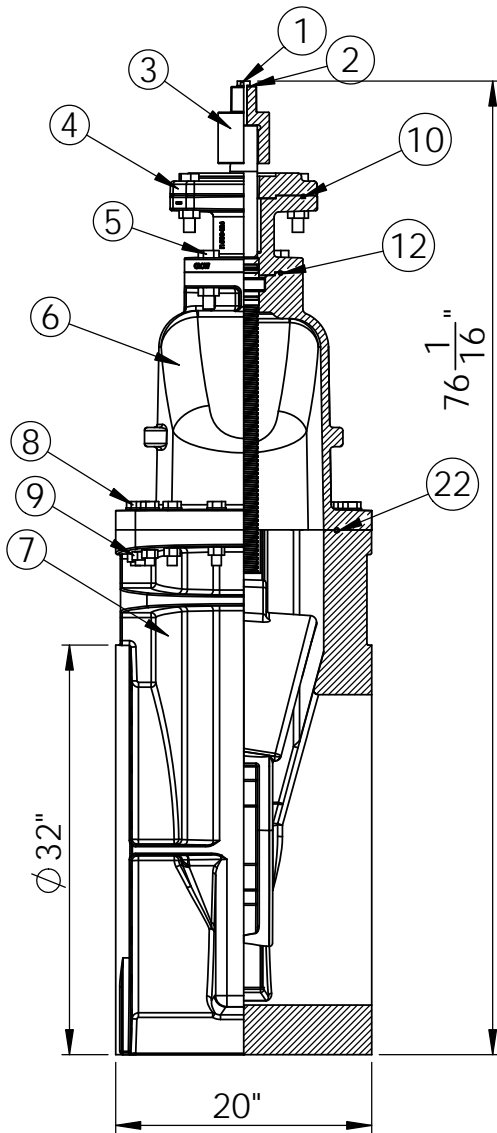
2638-188
A 02/18

COMPLIES WITH APPLICABLE
REQUIREMENTS OF AWWA C515

24" RW RTS ULFM NRS ASSEMBLY
GENERAL DIMENSIONS & MATERIAL LIST

KENNEDY VALVE COMPANY

MODEL 2638



ITEM NO.	DESCRIPTION	MATERIAL	ITEM NO.	DESCRIPTION	MATERIAL
1	BOLT	STEEL	13	THRUST WASHER	DELRIN
2	WASHER	STAINLESS STEEL	14	PIPE PLUG	STAINLESS STEEL
3	OP NUT	GREY IRON	15	TRACK	STAINLESS STEEL
4	ADAPTOR PLATE	DUCTILE IRON	16	ROLLER	COPPER ALLOY
5	HEX HEAD BOLT	STAINLESS STEEL	17	PIN	STAINLESS STEEL
6	COVER	DUCTILE IRON	18	SCRAPER	COPPER ALLOY
7	BODY	DUCTILE IRON	19	KEY	STEEL
8	HEX HEAD BOLT	STAINLESS STEEL	20	ORING	EPDM RUBBER
9	HEX NUT	STAINLESS STEEL	21	STEM	STAINLESS STEEL
10	ORING	EPDM RUBBER	22	ORING	EPDM RUBBER
11	EXTENSION	DUCTILE IRON	23	STEM NUT	COPPER ALLOY
12	ORING	EPDM RUBBER	24	WEDGE	DUCTILE IRON/EPDM RUBBER

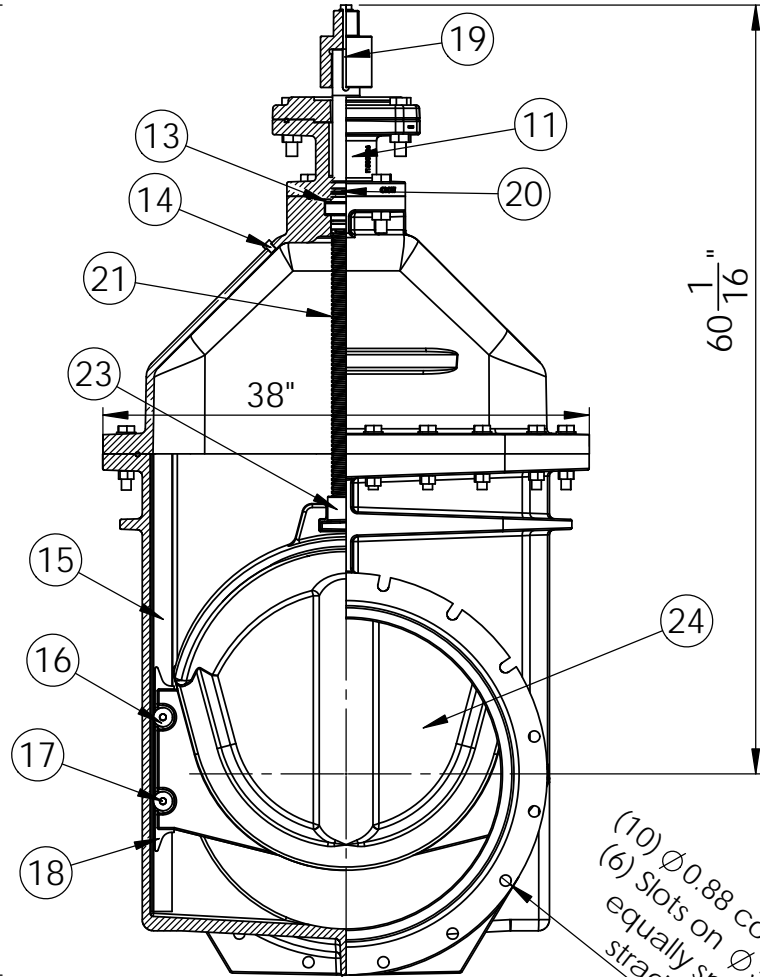
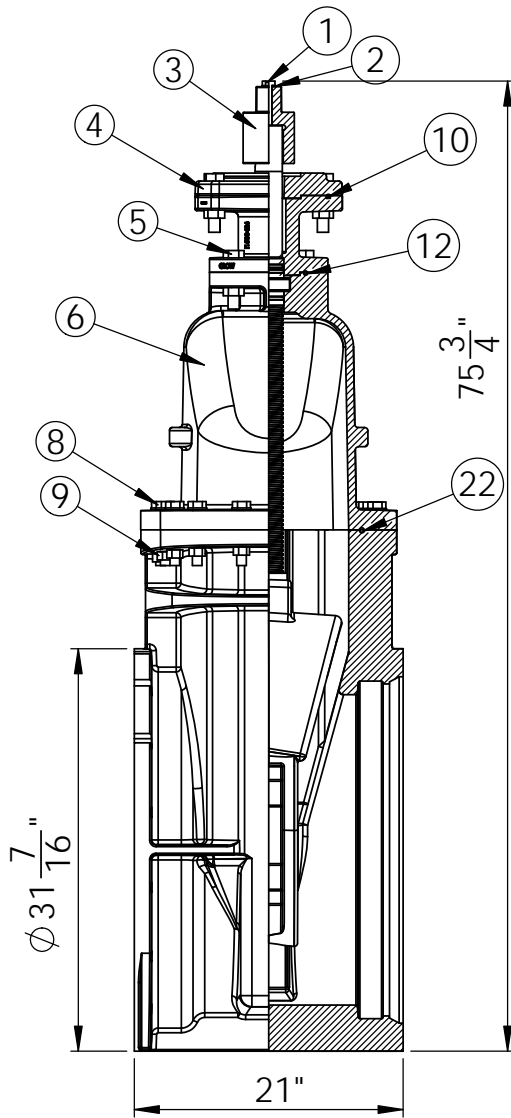
2638-207
- 02/18

COMPLIES WITH APPLICABLE
REQUIREMENTS OF AWWA C515

24" RW RTS ULFM NRS ASSEMBLY
MECHANICAL JOINT ENDS
GENERAL DIMENSIONS & MATERIAL LIST

KENNEDY VALVE COMPANY

MODEL 2638



(10) ϕ 0.88 cored holes &
(6) slots on ϕ 30.00 B.C.
equally spaced &
straddling CL's

ITEM NO.	DESCRIPTION	MATERIAL	ITEM NO.	DESCRIPTION	MATERIAL
1	BOLT	STEEL	13	THRUST WASHER	DELRIN
2	WASHER	STAINLESS STEEL	14	PIPE PLUG	STAINLESS STEEL
3	OP NUT	GREY IRON	15	TRACK	STAINLESS STEEL
4	INDICATOR ADAPTOR PLATE	DUCTILE IRON	16	ROLLER	COPPER ALLOY
5	HEX HEAD BOLT	STAINLESS STEEL	17	PIN	STAINLESS STEEL
6	COVER	DUCTILE IRON	18	SCRAPER	COPPER ALLOY
7	BODY	DUCTILE IRON	19	KEY	STEEL
8	HEX HEAD BOLT	STAINLESS STEEL	20	ORING	EPDM RUBBER
9	HEX NUT	STAINLESS STEEL	21	STEM	STAINLESS STEEL
10	ORING	EPDM RUBBER	22	ORING	EPDM RUBBER
11	EXTENSION	DUCTILE IRON	23	STEM NUT	COPPER ALLOY
12	ORING	EPDM RUBBER	24	WEDGE	DUCTILE IRON/EPDM RUBBER